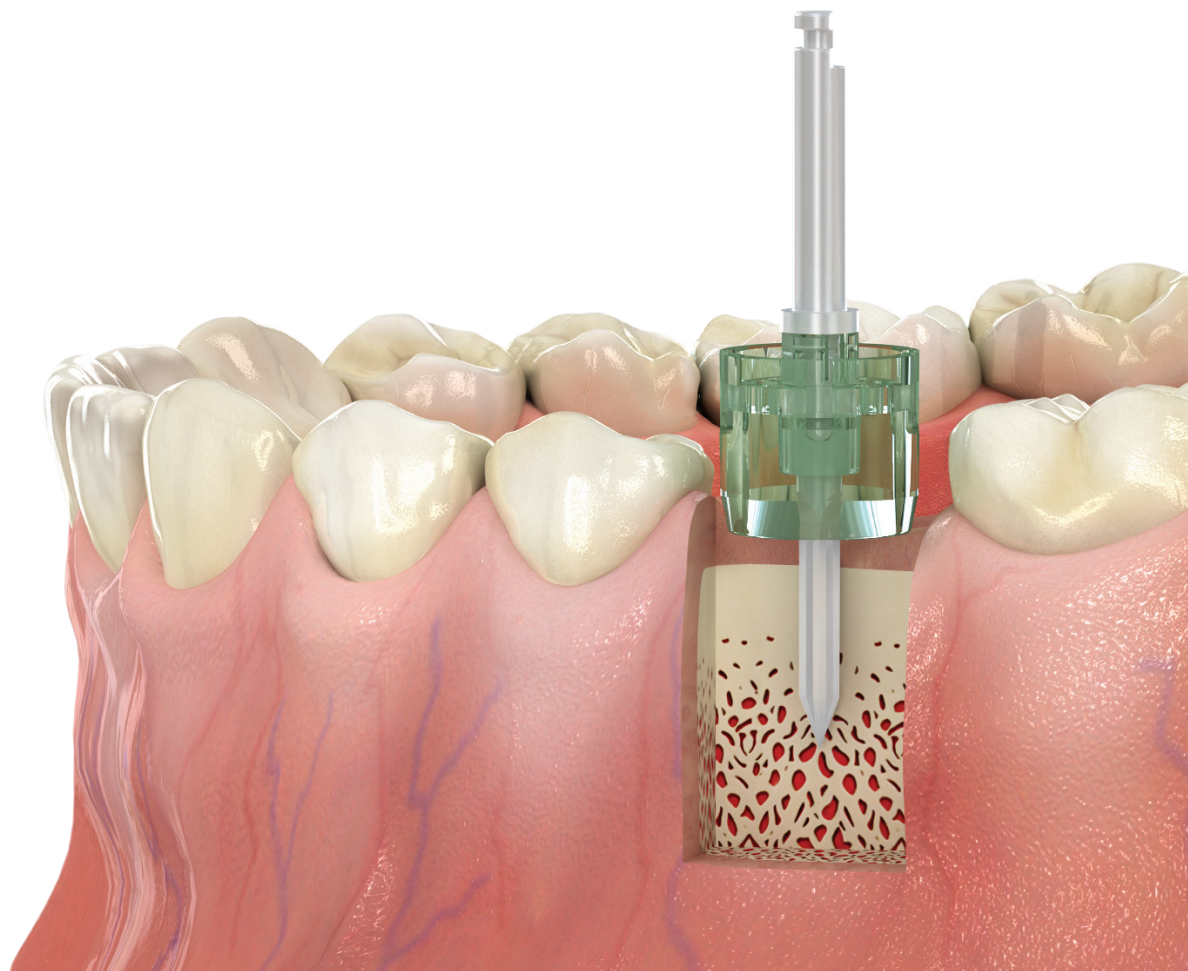
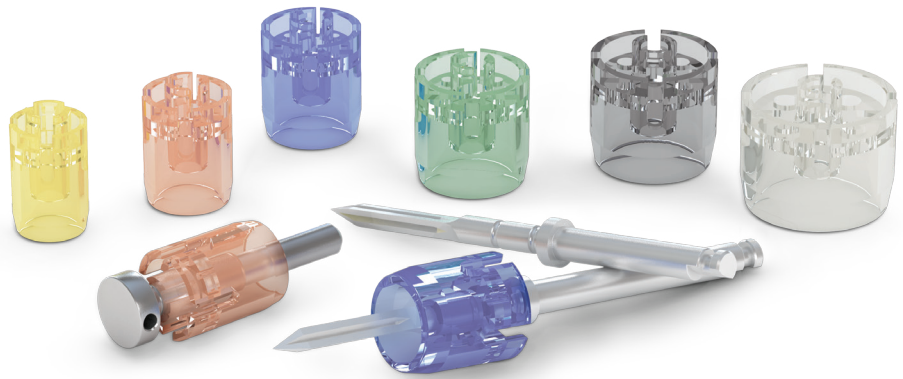


GUIDE **WHEEL**

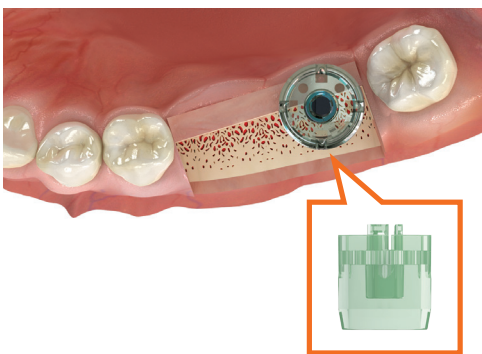
Surgical Guide Tool



Simple Solution for Implant Placement



No Guessworks! Visualize **Initial Drilling** and **Path of Osteotomy!**



+ Visualized Procedure

-Visible surgery site with transparent material

+ Simple Protocol

-Can be used with any initial drill

+ Enhanced Irrigation

-Mechanically enhanced irrigation system

+ Avoid Cross Contamination

-One time use, disposable

+ Versatile

-Applicable to single to multiple cases

+ Reduced chair time

-Easy determination of osteotomy site with simple comparison between Guide wheel and adjacent tooth

+ Economical Solution

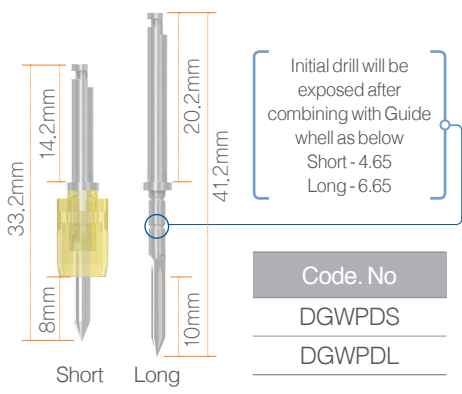
-Avoid using expensive and complex guided surgery system

Guide Wheel

- ▶ Compare guide wheel to opposing tooth to visualize safety margin and initial drilling path
- ▶ Visualize prosthetic result by comparing the size of guide wheel to adjacent teeth
- ▶ Assure the position of implants covered by tissue on the second stage surgery

Guide Wheel Products

Guide Wheel Initial Drill



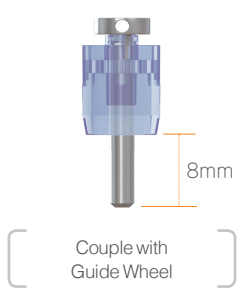
Guide Wheel



► Coupled with Initial Drill, utilize Guide Wheel for initial osteotomy and measurement for future prosthesis

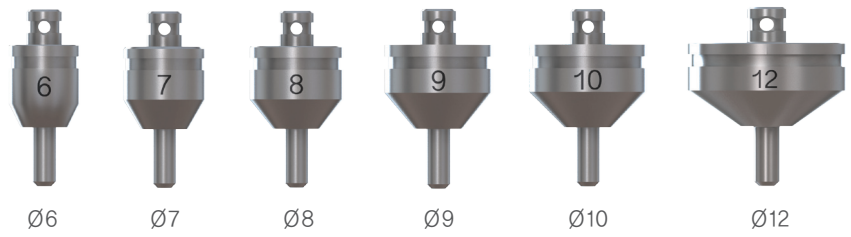
Code. No	DGW6	DGW7	DGW8	DGW9	DGW10	DGW12
Color	Yellow	Pink	Blue	Green	Black	Clear
Size	Ø6	Ø7	Ø8	Ø9	Ø10	Ø12

Guide Pole



Code. No	DGWGP
----------	-------

Guide Pin



► Apply Guide Pin on osteotomy to visualize future prosthesis
► Apply Guide Pin for multiple cases

Code. No	DGWP6	DGWP7	DGWP8	DGWP9	DGWP10	DGWP12
Size	Ø6	Ø7	Ø8	Ø9	Ø10	Ø12

www.dentisimplant.co.kr/eng/



Tel. +82-1899-2804 | Fax. +82-53-583-2806
99, Seongseoseo-Ro, Dalseo-Gu, Daegu, Korea



Tel. +1-323-677-4363~5 | Fax. +1-323-677-4366
6 Centerpointe Drive, Suite 600 La Palma CA 90623



Tel. +886-2-2808-5933 | Fax. +886-2-2624-2309
2F.,No.48,31,Minzu Rd., Tamsui Dist, New Taipei City 251,Taiwan(R.O.C.)



Tel. +021-5111-3828 | Fax. +021-5111-3828
上海市长宁区中山西路933号2205室