

# DENTIS SOLUTION

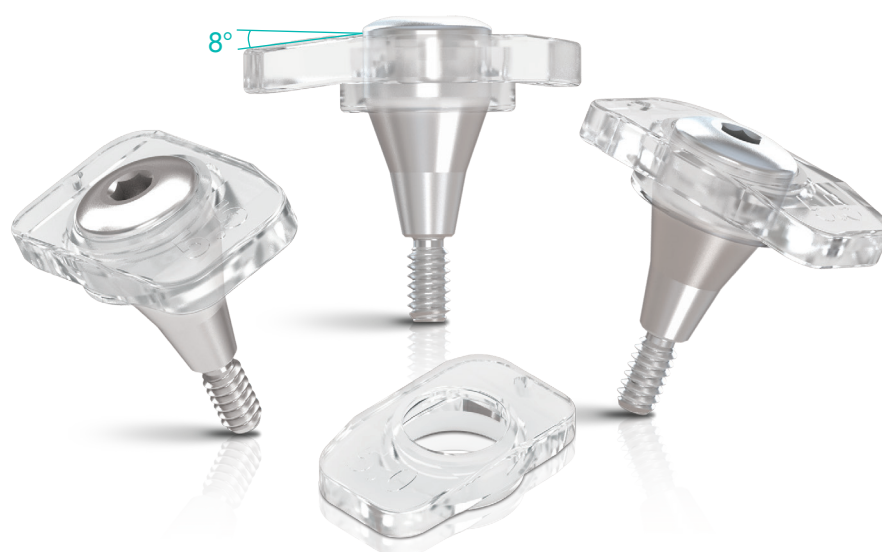
MISCELLANEOUS 1.0

## Louis Button II NEW

**Gain attached gingiva in easy and simple way!**

- Simple way by inserting, instead of Suture
- Acquire attached gingiva!
- Increase stricture gingiva volume!
- Compatible with other company's healing abutment!

specifications	Code
Ø4.0	DLB2T40
Ø4.5	DLB2T45
Ø5.0	DLB2T50
Ø5.5	DLB2T55
Ø6.0	DLB2T60
Ø6.5	DLB2T65
Ø7.5	DLB2T75



## Guide Wheel

**The easiest solution can find the position & direction of implant**

### Visible treatment

- Secured visibility by transparent material

### Easy to use

- Use immediately after connecting exclusive drill

### Reduced bone heating

- Made the irrigation inside of wheel

### Made the irrigation hole inside of wheel

- Hygienic disposable product

### High frequency of use

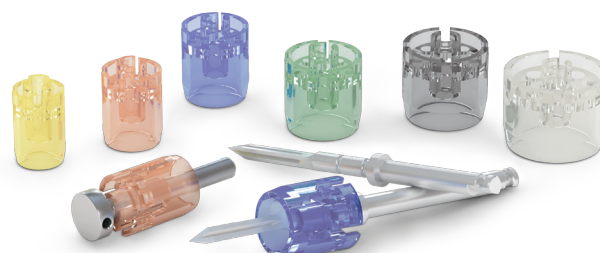
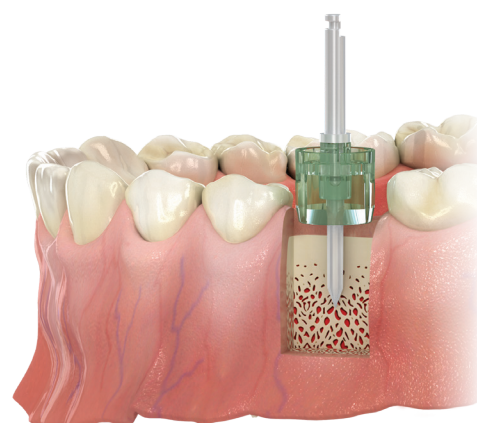
- From single to multiple cases

### Reduced chair time

- Predicable placement reduced operation time by comparing adjacent tooth

### Easy and economical solution

- Possible to use without using complex guide systems and tools



## DOA Magnetic

### Easy denture

- Easy detachable way by magnetic

### Clean denture

- Possible of clean hygiene management by simple structure  
Easy path correction

### Easy path correction

- Simple way of path correction function(15°) by Dome type retainer  
Block a harmful pressure from lateral side

### Block a harmful pressure from lateral side

- block an excessive load transfer of alveolar bone by natural separation of Retainer and Keeper.



## Kerator

### Male cap set



3 lbs



1.5 lbs



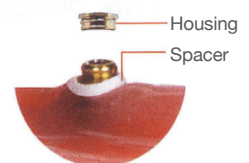
Extra Light Angled



### It can be used in dentures



- Take position of dentures and make hole by using Denture Bur
- Pour the Denture Resin in that hole to fix the Metal Housing and make new dentures



- After Combining the Metal housing with Blockout Spacer inside the mouth, press Denture by Denture Resin. Any undercut and trimming is not needed

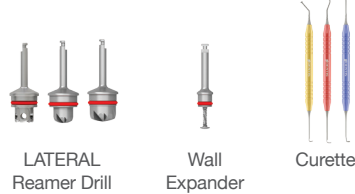
## SAVE SINUS

Total SINUS Kit performing crestal and lateral approach allows safer and faster sinus lifting

### • CRESTAL approach tools

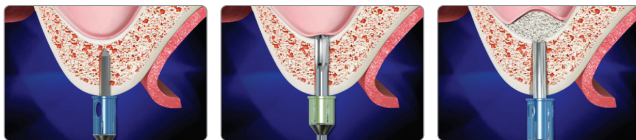


### • CRESTAL approach tools



## SAVE CRESTAL

SAVE CRESTAL enables safe sinus lifting using specially designed reamer



Marking in surgical site by Guide drill

Drilling over 1mm in SD-reamer by Stopper

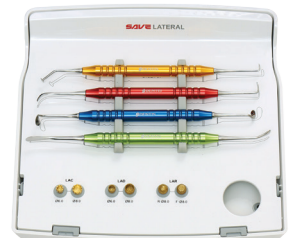
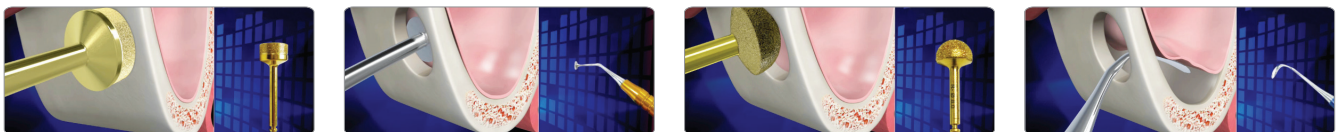
Fill out Bone or graft material by packer in lifted membrane



## SAVE LATERAL

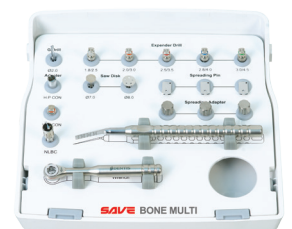
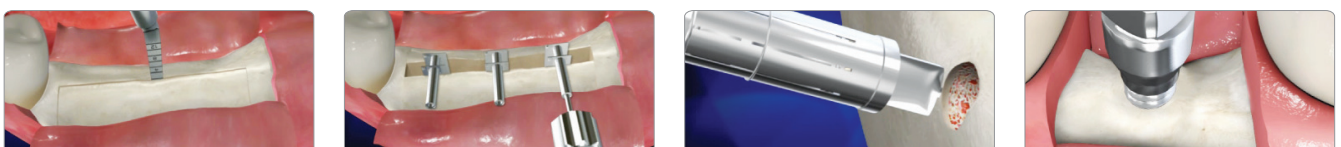
SAVE LATERAL enables to make sinus lateral window in safe and speedy way in case of 1-3mm residual bone, perforated membrane at crestal approach or placement of multiple implants

- Form Lateral Window in safe and speedy
- Provide sinus curette which has comfortable handling



## SAVE BONE MULTI

- Solve various surgery cases in narrow ridge
- Application in single/multi implant surgery
- Solve a ridge split and extract self-bone at once



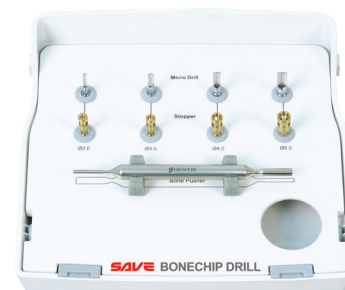
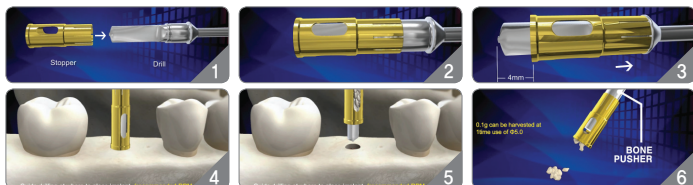




## SAVE BONECHIP DRILL

SAVE BONECHIP DRILL is to harvest patient's own bone for autograft using drills

- Non-slip drilling by Micro Drill dump
- Possible to harvest autograft in diverse sizes depending on bone condition



## SAVE BONE BASIC

- Handle soft tissue or bone
- Basically it is useful in surgical procedure or periodontal surgery

[Components]

Periosteal Elevator Molt 9, Periosteal Elevator Pritchard, Seldin Periosteal Elevator, Hemostat 12cm (Curved), ADSON(SAW TYPE) 12cm, Iris Scissors T/C, Lagrange Scissors 11cm, Bone Rongeur 14cm, Mallet, Gracey Curette, Minnesota Retractor, Needle Holder T/C 16cm, Scalpel Holder (Straight), Scalpel Holder (Stick), Ochsenbein Chisel, Titanium Suction set, Wide Pincette, Mirror Set, Castro Caliper (Curved), Periosteal Elevator P24G, Bone Curette Curved, Bone Curette Curved 6, Towel Clamp, Bone Well



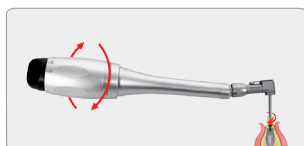
## SAVE TORQUE DRIVER

- To enter abutment with the recommended torque value using screw
- Useful with posterior which is difficult to handle with Wrench



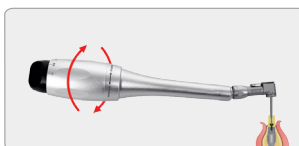
### Installation

Place the driver by turning the latch key to the right, then turn the latch key to the left to close it.



### Torque Control

Control torque value with the Torque Selector and turn the handle to the right until it clicks into position.



### Operation

When you take it off, turn it to the opposite side.



## SAVE REMOVER KIT

To remove safely when Fixture and Abutment Screw is destroyed

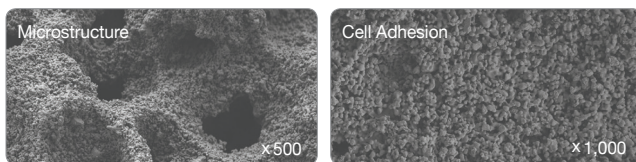
- Screw remover system
- Fixture remover system



## Ovis BONE BCP

Great biocompatible and bioactive Hydroxyapatite 100%

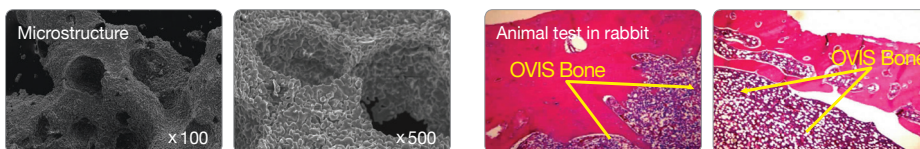
- Osteoconductive synthetic bone graft
- Bone void filler for dental surgery
- Non toxicity
- Non inflammatory nature
- Easy manipulation
- Well-formed Macro/Micro porous



## Ovis BONE HA

Biphasic calcium phosphate composed of HA 20% +  $\beta$ -TCP 80%

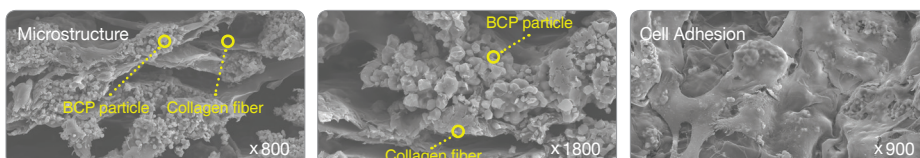
- Osteoconductive synthetic bone graft with higher  $\beta$ -TCP content
- Excellent wettability
- Easy manipulation
- Biocompatibility and great bioactivity
- Well-formed Macro/Micro porous
- Porosity : 70%



## Ovis BCP/Collagen MEMBRANE NEW

Resorbable barrier membrane composed of Atelocollagen + BCP(Biphasic calcium phosphate)

- Biodegradable collagen membrane
- Easy manipulation with soft and excellent wettability
- Double-sided usage
- Resorption period of 4-6months



## Rapiderm M

### Characteristics

- High purity medical type | Atelocollagen(Purity 99.83%)
- Biodegradable collagen which is biological-friendly
- Outstanding osteogenesis
- Helps regenerating wounded area
- Cell block effect and maintenance of space
- Sufficient persistent function : absorption speed 3~6month
- No inflammation adjustment and absorption in body after a period of time
- Certification CE2265

### Product Information

Rapi-Gide®	1.5X3cm	1ea/box	Storage/Warranty	2~8°C/3years
------------	---------	---------	------------------	--------------



## Orascar

### Intraoral wound dressing

The non-eugenol periodontal dressing for protecting the wound in mouth

**Effectiveness** : use after the implant, tooth extraction, surgical periodontal treatment, esthetic and periodontal treatment

- Protect affected area from food, germ, saliva, tongue, cigarette smoke ext
- Assistant hemostatic, Bleeding Control
- Prevent secondary infection
- Protect Open Suture
- Protect tongue from suture thread
- Protect stomatitis occurred area
- Prevent tongue and mucous membrane wound from Orthodontic appliance



## Implant Pointer®

- Simple composition with main body and 2 tips
- Possible of minimum incision with correct detection
- Easily use





# DIT 'SONIC SURGEON 300'

The Sonic Surgeon 300 is piezo ceramics for use in dental surgery Innovation in the hands of the oral and bone surgeon

## 1) High Output and Improved Patient Safety

- By implementing the world's top-level output, Sonic Surgeon 300 has widened the application scope of operation and decreased operation time. As force exerted by operator is minimized, pain experienced by patient and damage to soft tissues are minimized.

## 2) More Stable Output

- Based on technology of design and manufacture of piezo materials and elements, the core of ultrasonic operation unit, Sonic Surgeon 300 produces more stable and optimized output.

## 3) Diverse Tip Application Including Patented Tip

- Safer and more convenient sinus operation is achieved with application of the patented crestal approach (HPISE)<sup>®</sup> tip. 10 different tips make diverse application for dental surgeries possible.

## 4) Top-level Water Infusion Achieved

- With the maximum water supplies of 100ml/min, bone heating has been minimized.

## 5) Multi-function & Ergonomically Designed Foot S/W

- The multi-function switch increases convenience of control. The slim design prevents fatigue of foot even during long operation.



### Special Tips



Sohn 028i



Sohn 016



Sohn Saw



Sohn Saw L.R

### Standard Tips



DS 001



DS 002



DS 003



DS 004



DS 005

# X-CUBE

**BLDC motor (Speed Range 0~50,000rpm) and Angle (Standard equipment 20:1) provides the optimum torque in surgery**

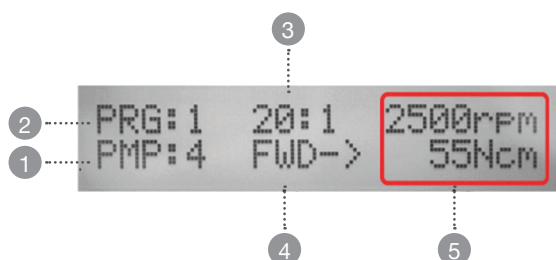
- RPM : (20:1) 30rpm ~ 2,500rpm / (32:1) 20rpm ~ 1,562rpm
- Torque : (20:1) 5.0 ~ 55Ncm / (32:1) 5.0 ~ 65Ncm
- Gear ratio: 1:5 / 1:4 / 1:1 / 16:1 / 20:1 / 27:1 / 32:1 / 64:1

## Program memory function

- 10 programable memories for setting Speed, Torque, Rotating Direction, Irrigation Pump
- Automatic overload protection function
- If the load on the Bur is higher than set Torque, the motor is stopped automatically after 2 seconds
- For releasing the overload function, push foot control pedal
- Actual RPM and Torque is indicated when motor is running, which makes user verify proper working condition during operation

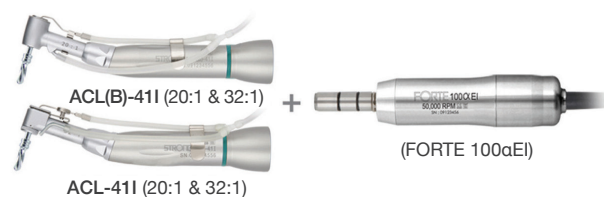
## Ergonomic foot control pedal

- The foot control pedal is designed ergonomically to control all the functions and it provides high convenience.
- Membrane touch display
- Self- diagnosis function



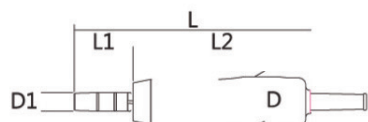
- 1 Irrigation volume display
- 2 Program number display
- 3 Gear ratio display
- 4 Direction display
- 5 Speed / Torque display

LEVER TYPE	ACL-41I	ACL-42I	ACL-43I	ACL-45I
	20:1 60g	16:1 60g	64:1 64g	32:1 60g
BUTTON TYPE	ACL(B)-41I	ACL(B)-42I	ACL(B)-43I	ACL(B)-45I
	20:1 60g	16:1 60g	64:1 64g	32:1 60g



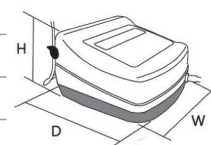
## IMPLANT MOTOR

NON LOAD RPM	WELGHT	DEMENSION (mm)					134℃
		L	L1	L2	D	D1	
50.000	212g	128	32	96	27	10	



## CONTROL BOX

INPUT	AC100~120V / 220~240V
FUSE	5A / 2A
FREQUENCY OUTPUT	50 / 60 Hz Max:120W
MAXIMUM PUMP	Max.75mL / min
DIMENSIONS(mm)	W205 X D210 X H136
WEIGHT	3.3kg



# Traus SIP10

## BLDC motor with high performance designed by high technology and know-how

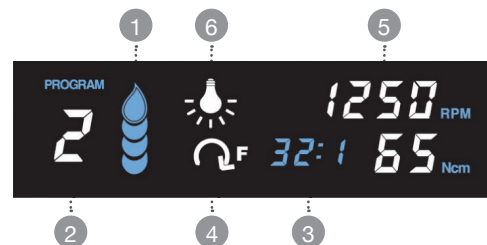
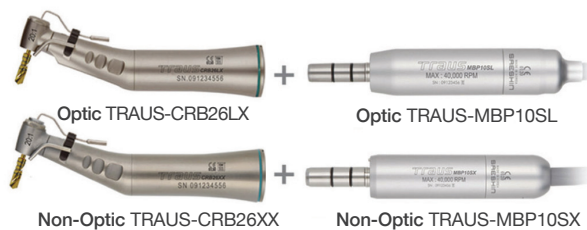
- RPM : (20:1) 30rpm ~ 2,000rpm / (32:1) 20rpm ~ 1,250rpm
- Torque: (20:1) 5.0 ~ 55Ncm / (32:1) 5.0 ~ 65Ncm
- Gear ratio: 1:5 / 1:4 / 1:1 / 16:1 / 20:1 / 27:1 / 32:1 / 64:1
- Contra angle: TRAU5 CRB26L.X (Optic) / TRAU5 CRB26XX (Non Optic), MAX TORQUE : 80Ncm
- E-type motor: TRAUS MBP10SL(SX) followed "ISO 3964" for standard connection (BLDC motor – 0~40,000rpm)
- Maximum pump: Max.75mL/min - LED (25,000 Lux)

## 10 programs memory function

- Automatic overload protection function
- Indication of actual PRM and torque on operation for proper working condition

## Ergonomic foot controller

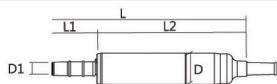
- Optic function (Option)



## IMPLANT MOTOR

Traus MBP10SX

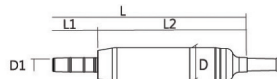
NON LOAD RPM	WELGHT	DEMENSION (mm)					134℃
		L	L1	L2	D	D1	
40,000	121g	137	32.7	105	22	9.8	



Traus MBP10SL

NON LOAD RPM	WELGHT	DEMENSION (mm)					134℃
		L	L1	L2	D	D1	
40.000	150g	137	32.7	105	24	9.8	

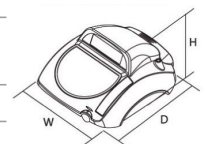
\*LED : 25,000 LUX



- 1 Irrigation volume display
- 2 Program number display
- 3 Gear ratio display
- 4 Direction display
- 5 Speed / Torque display
- 6 Optic display (Ver. optic angle)

## CONTROL BOX

INPUT	AC100~120V / 220~240V
FUSE	5A / 2A
FREQUENCY	50 / 60 Hz
OUTPUT	Max:120W
MAXIMUM PUMP	Max.75mL / min
DIMENSIONS(mm)	W233 X D269 X H120
WEIGHT	4.5kg



[www.dentisimplant.co.kr/eng/](http://www.dentisimplant.co.kr/eng/)



Tel. +82-1899-2804 | Fax. +82-53-583-2806  
99, Seongseoseo-Ro, Dalseo-Gu, Daegu, Korea



Tel. +1-323-677-4363~5 | Fax. +1-323-677-4366  
6 Centerpointe Drive, Suite 600 La Palma CA 90623



Tel. +886-2-2808-5933 | Fax. +886-2-2624-2309  
2F., No.48,31,Minzu Rd., Tamsui Dist, New Taipei City 251,Taiwan(R.O.C.)



Tel. +021-5111-3828 | Fax. +021-5111-3828  
上海市长宁区中山西路933号2205室